

SS

Small Droplet Size Dense Mist

DESIGN FEATURES

- Twelve multiple flat fan patterns
- Solid one-piece construction
- Female connection

SPRAY CHARACTERISTICS

- Multiple flat fans produce coarser spray at lower pressures and dense, far reaching mist at higher pressures
- Relatively small droplets

Spray pattern: Dense full cone

Flow rates: 2.40 to 157 gpm

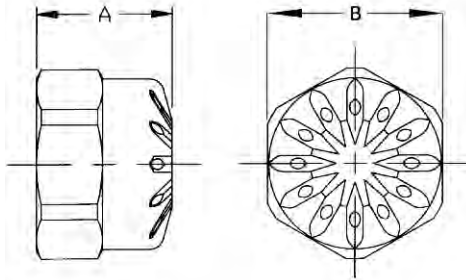
Spray angles: **SS4.8** thru **SS25** - 35°
SS35 thru **SS70** - 45°



MISTING



Mist



Dimensions are approximate. Check with BETE for critical dimension applications.

SS Flow Rates and Dimensions

Full Cone Mist, 3/4", 1" and 1-1/4" Pipe Size

Female Pipe Size	Nozzle Number	K Factor	GALLONS PER MINUTE @ PSI										Dimensions (in.)		Wt. (oz.)
			10 PSI	20 PSI	30 PSI	40 PSI	50 PSI	60 PSI	80 PSI	100 PSI	150 PSI	200 PSI	A	B	
3/4	SS4.8	0.759	2.40	3.39	4.16	4.80	5.37	5.88	6.79	7.59	9.3	10.7	1.0	1.25	3
	SS9	1.42	4.50	6.36	7.79	9.00	10.1	11.0	12.7	14.2	17.4	20.1			
	SS12	1.90	6.00	8.49	10.4	12.0	13.4	14.7	17.0	19.0	23.2	26.8			
	SS18	2.85	9.00	12.7	15.6	18.0	20.1	22.0	25.5	28.5	34.9	40.2			
1	SS25	3.95	12.5	17.7	21.7	25.0	28.0	30.6	35.4	39.5	48.4	55.9	1.16	1.50	5
	SS35	5.53	17.5	24.7	30.3	35.0	39.1	42.9	49.5	55.3	67.8	78.3			
1 1/4	SS50	7.91	25.0	35.4	43.3	50.0	55.9	61.2	70.7	79.1	96.8	112	1.22	1.88	8
	SS70	11.1	35.0	49.5	60.6	70.0	78.3	85.7	99.0	111	136	157			

$$\text{Flow Rate (GPM)} = K \sqrt{\text{PSI}}$$

Standard Materials: Brass, 303 and 316 Stainless Steel.

Spray angle performance varies with pressure. Contact BETE for specific data on critical applications.

CALL 413-772-0846
Call for the name of your nearest BETE representative.