

NCFL



Plastic Flanged

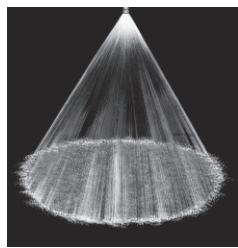
Flange Connection/Plastic Material

DESIGN FEATURES

- Large internal passages
- Uniform spray coverage
- High flow rates with coarse atomization
- Variety of polymer materials available, offering high corrosion resistance
- For metal alloy nozzles refer to SC (pp. 32, 33) and TC (p. 39).

SPRAY CHARACTERISTICS

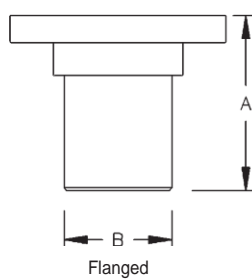
Spray pattern: Full Cone
Spray angles: 60°, 90°, and 120°
Flow rates: 94 to 4360 gpm
 (Special flow rates available)



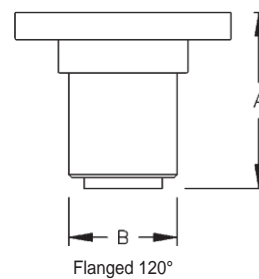
Full Cone 60° (N)



Full Cone 120° (W)



Flanged



Flanged 120°

Dimensions are approximate. Check with BETE for critical dimension applications.

NCFL Flow Rates and Dimensions

Full Cone, Narrow 60° (N), Medium 90° (M) and Wide 120° (W) Spray Angles, Flanged Connection*

| Pipe Size | Nozzle Number | K Factor | GALLONS PER MINUTE @ PSI | | | | | | | Approx. Free Pass. | | Dim. (in.) | | Wt. PVC (lbs.) |
|-----------|---------------|----------|--------------------------|-------|-------|--------|--------|--------|--------|--------------------|------------------|------------|------|----------------|
| | | | 3 PSI | 5 PSI | 7 PSI | 10 PSI | 12 PSI | 15 PSI | 20 PSI | Orifice Dia. (in.) | Pass. Dia. (in.) | A | B | |
| 4 | NCFL40140 | 56.1 | 94.0 | 120 | 140 | 166 | 180 | 200 | 229 | 1.48 | 1.00 | 6.30 | 4.50 | 8.0 |
| | NCFL40180 | 72.1 | 121 | 154 | 180 | 213 | 232 | 258 | 295 | 1.69 | 1.31 | | | |
| | NCFL40250 | 100 | 168 | 213 | 250 | 296 | 322 | 358 | 409 | 1.98 | 1.58 | | | |
| 6 | NCFL60350 | 140 | 235 | 299 | 350 | 414 | 451 | 501 | 573 | 2.38 | 1.70 | 10.0 | 6.62 | 14 |
| | NCFL60480 | 192 | 322 | 410 | 480 | 568 | 618 | 687 | 786 | 2.75 | 1.75 | | | |
| | NCFL60615 | 246 | 413 | 525 | 615 | 727 | 792 | 880 | 1010 | 3.11 | 1.97 | | | |
| 8 | NCFL80665 | 266 | 447 | 568 | 665 | 786 | 857 | 951 | 1090 | 3.25 | 2.12 | 12.0 | 8.62 | 26 |
| | NCFL80775 | 311 | 520 | 662 | 775 | 916 | 998 | 1110 | 1270 | 3.52 | 2.38 | | | |
| | NCFL80885 | 355 | 594 | 756 | 885 | 1050 | 1140 | 1270 | 1450 | 3.75 | 2.62 | | | |
| 12 | NCFL1201280 | 513 | 860 | 1090 | 1280 | 1510 | 1650 | 1830 | 2100 | 4.50 | 2.88 | 18.0 | 12.7 | 70 |
| | NCFL1201910 | 765 | 1280 | 1630 | 1910 | 2260 | 2460 | 2730 | 3130 | 5.50 | 3.25 | | | |
| | NCFL1202665 | 1070 | 1790 | 2270 | 2665 | 3150 | 3430 | 3810 | 4360 | 6.25 | 3.50 | | | |

Flow Rate (GPM) = K (PSI)^{0.47} *150# flange standard; other options available upon request.

Standard Materials: PVC, Polypropylene, and PTFE (12" NCFL not available in PTFE).

Spray angle performance varies with pressure. Contact BETE for specific data on critical applications.

TO ORDER: specify pipe size, connection type, nozzle number, spray angle, and material.