

# HydroWhirl® Mini



(HWM) Stainless Steel Reactionary Force



## DESIGN FEATURES

- Fluid-driven, self-flushing
- Durable compact design, maintenance-free
- Made from FDA-compliant, 316L material
- Suitable for food applications
- PEEK slide-bearing for greater longevity

## SPRAY CHARACTERISTICS

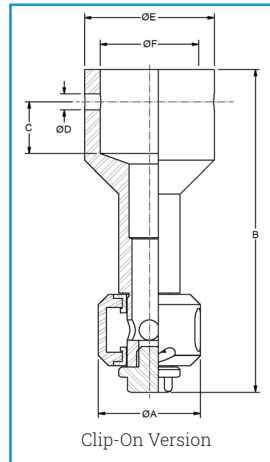
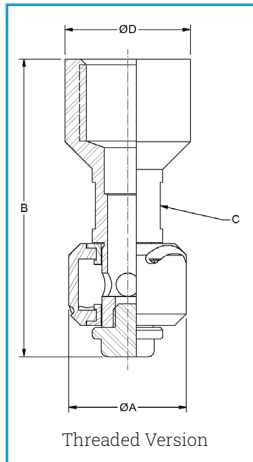
- Vigorous spray action

**Spray Angles:** Complete 360° spray coverage

**Flow Rates:** 13.9 to 34.5 l/min

**Max Temperature:** 266°F/130°C

**Filtration:** Line strainer with a mesh size of 0.3 mm/50 mesh



## DIMENSIONS IN MILLIMETERS (CLIP-ON)

Tube Size	A	B	C	D	E	F	Weight (grams)	Min. Entry Dia
3/4"	20.3	63.5	10.2	2.54	25.4	20.3	31.1	31.2

## DIMENSIONS IN MILLIMETERS (THREADED)

Pipe Size	A	B	C	D	Weight (grams)
3/8"	20.3	50.8	12.7	17.8	73.7

## HYDROWHIRL® MINI FLOW RATES

Materials: 316L Stainless Steel Body, PEEK Slide-Bearing

Female Connection Type	Nozzle Number	Spray Angles	Flow Rate (L/min) @ Differential Pressure (bar)					Maximum Free Passage	Coverage Dia @ 3 bar
			0.7	1	2	3	4		
			bar	bar	bar	bar	bar		
3/8" FNPT 3/4" Tube Clip-On	HWM-7.5	360°	13.9	16.7	24.0	29.7	34.5	1.52	2

Flow rates represent threaded connections with a 360° spray angle.